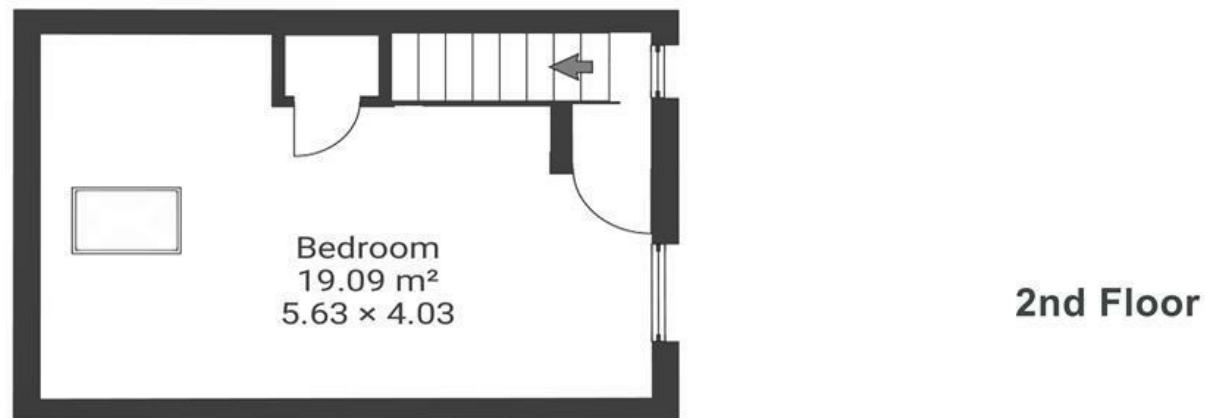
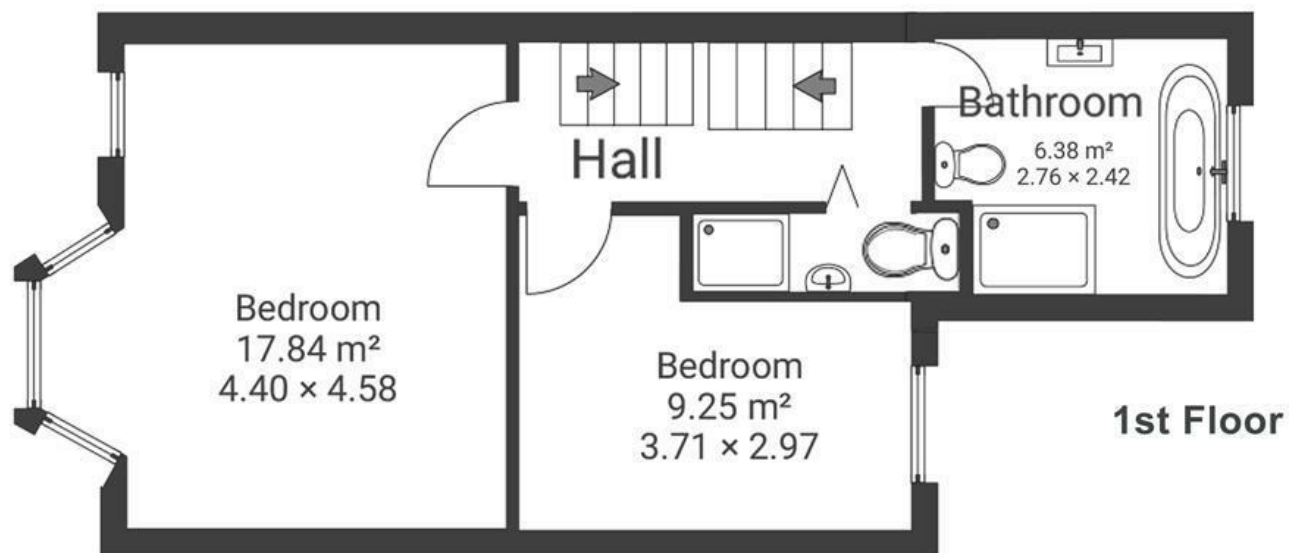
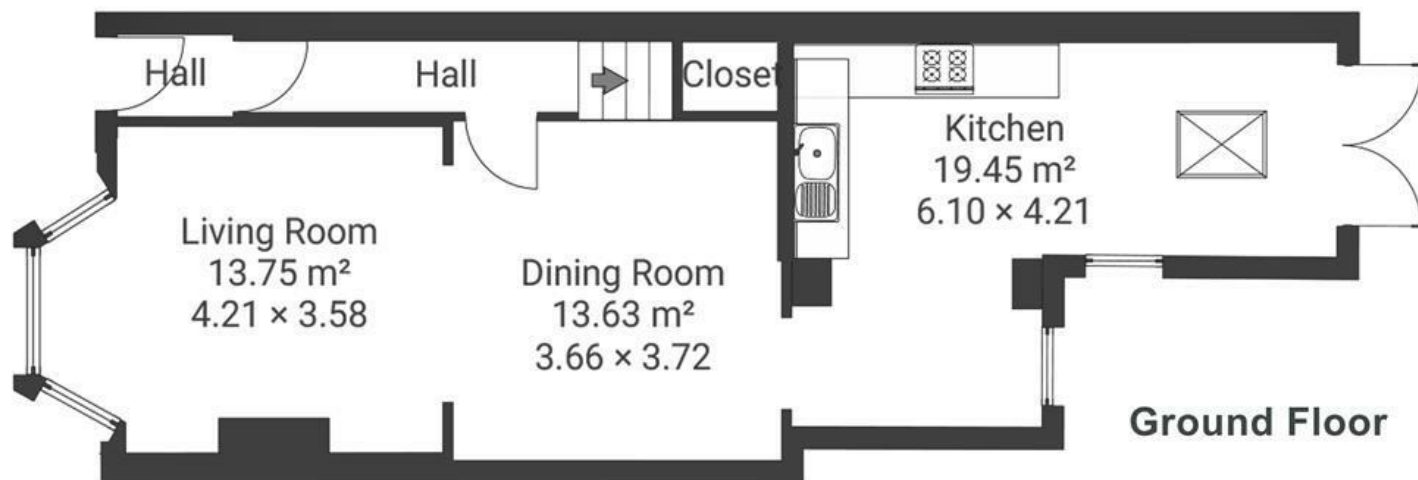


Almorah Road

VICTORIA PARK

APPROXIMATE FLOOR AREA
115 SQM / 1237 SQFT



Boardwalk

Almorah Road

VICTORIA PARK, BRISTOL



£525,000



3 Bedrooms



Bristol, BS3

400



2 Bathrooms

"With a small boy and dog to run, Victoria Park became central to our daily lives, there are excellent community events, a brilliant fair, watching the balloons drift over from the Festival, outdoor cinema, Art on The Hill, Bonfire and Xmas carols in the park. The park is well-loved and looked after by the community, there is a great dog-walking community too! It is vibrant with picnics, birthday parties as well as daily community events and also the lovely orange Campervan cafe. I will be very sad to leave this brilliant family home, the neighbourly street with its supportive group chat and friendly faces, it really has been a great place to live, bring up children, make friends and a lead happy creative life, a 'lucky house' indeed!"

